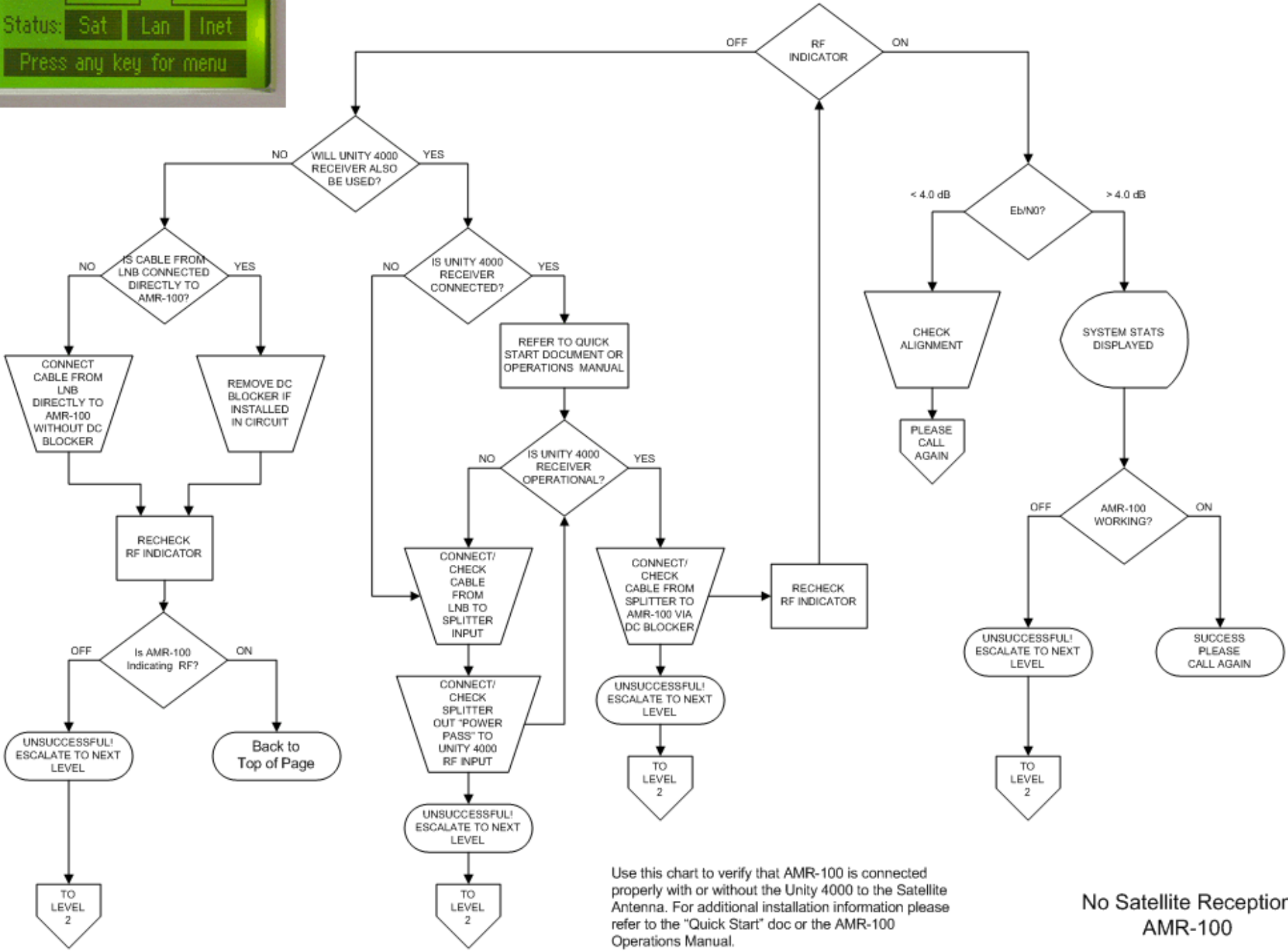


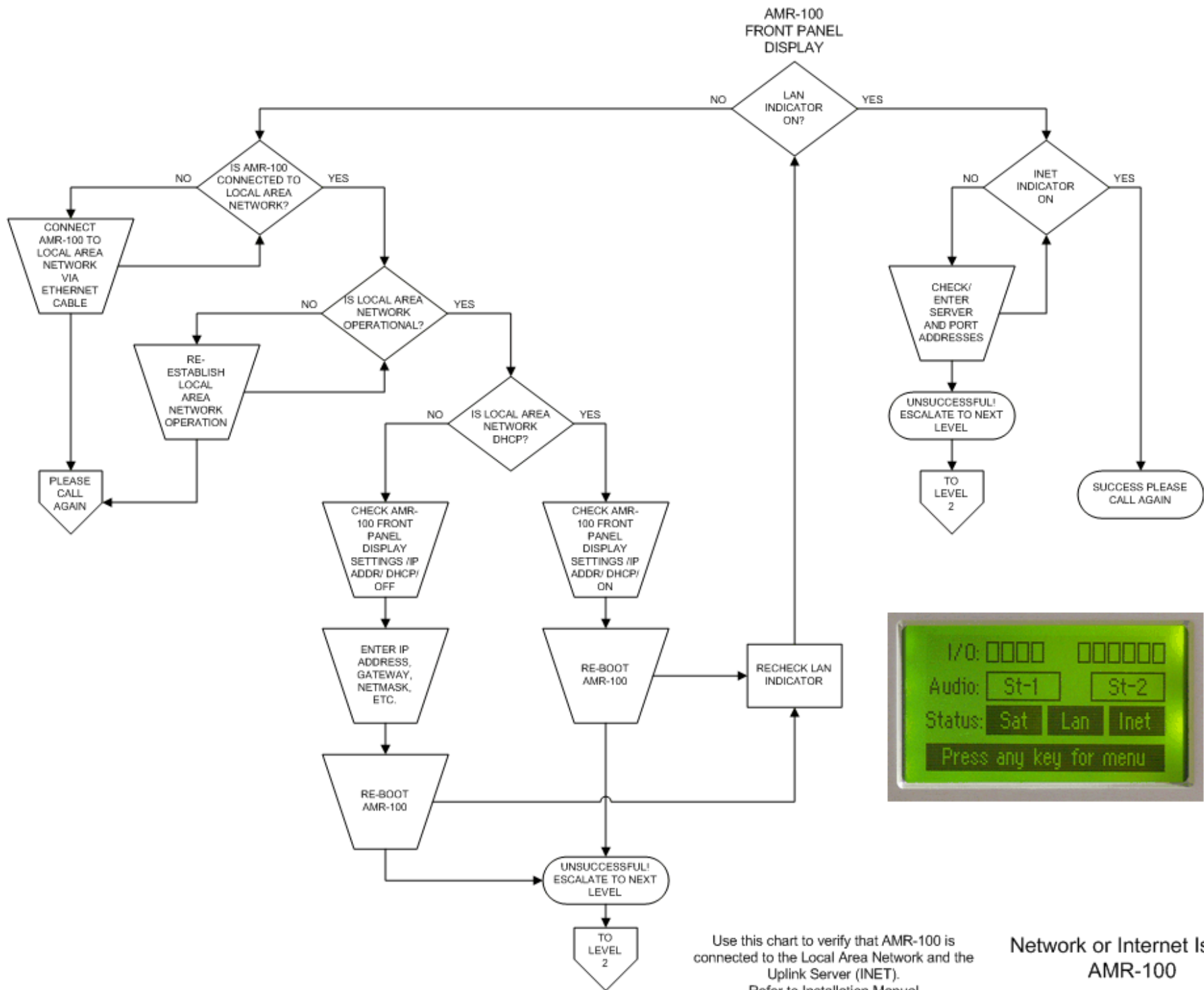


AMR-100 FRONT PANEL DISPLAY



Use this chart to verify that AMR-100 is connected properly with or without the Unity 4000 to the Satellite Antenna. For additional installation information please refer to the "Quick Start" doc or the AMR-100 Operations Manual.

No Satellite Reception
AMR-100



Use this chart to verify that AMR-100 is connected to the Local Area Network and the Uplink Server (INET). Refer to Installation Manual

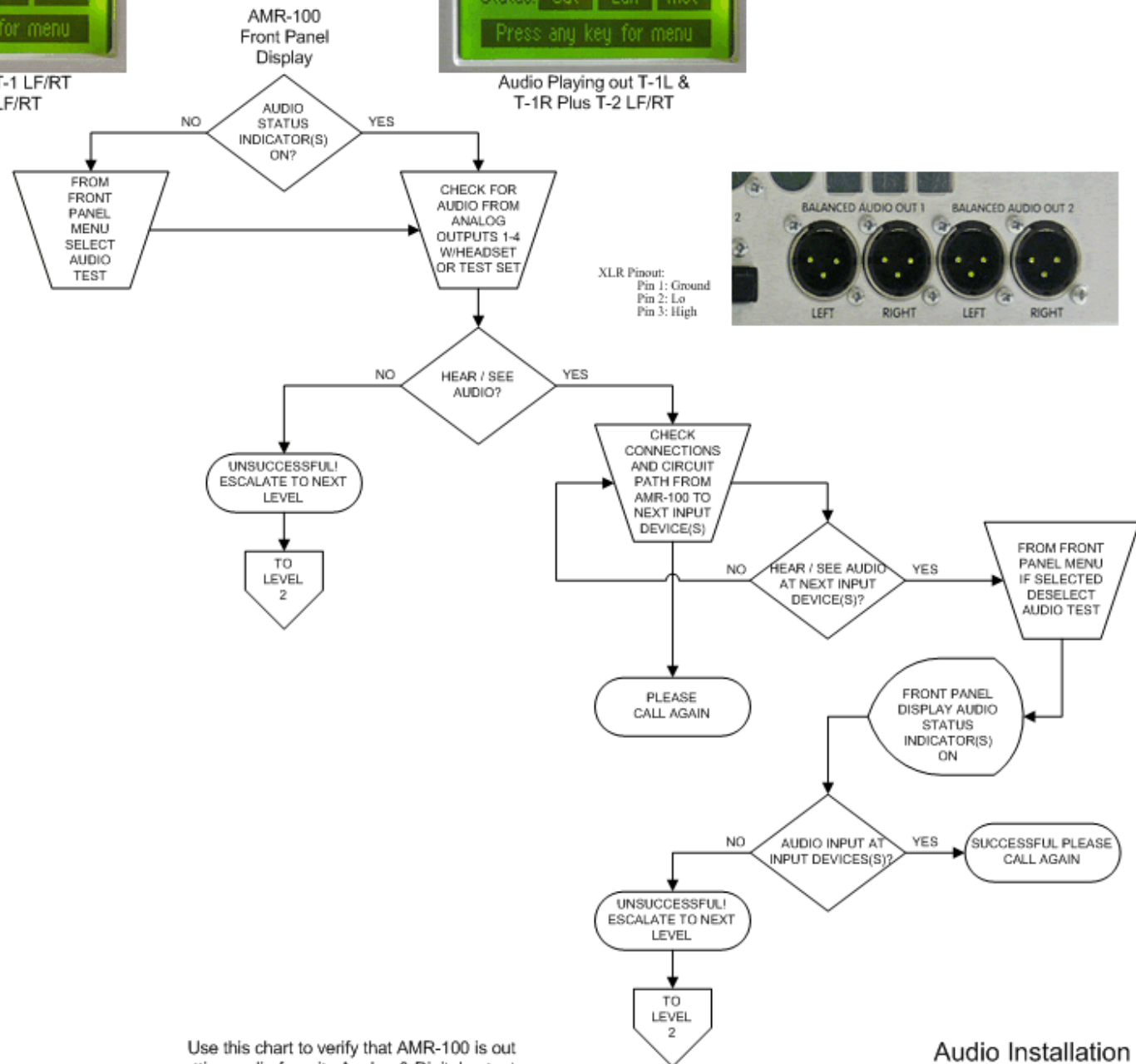
**Network or Internet Issues
AMR-100**



NO Audio from T-1 LF/RT
 or from T-2 LF/RT



Audio Playing out T-1L &
 T-1R Plus T-2 LF/RT



Use this chart to verify that AMR-100 is out
 putting audio from its Analog & Digital outputs.
 Refer to page 17 of Installation Manual

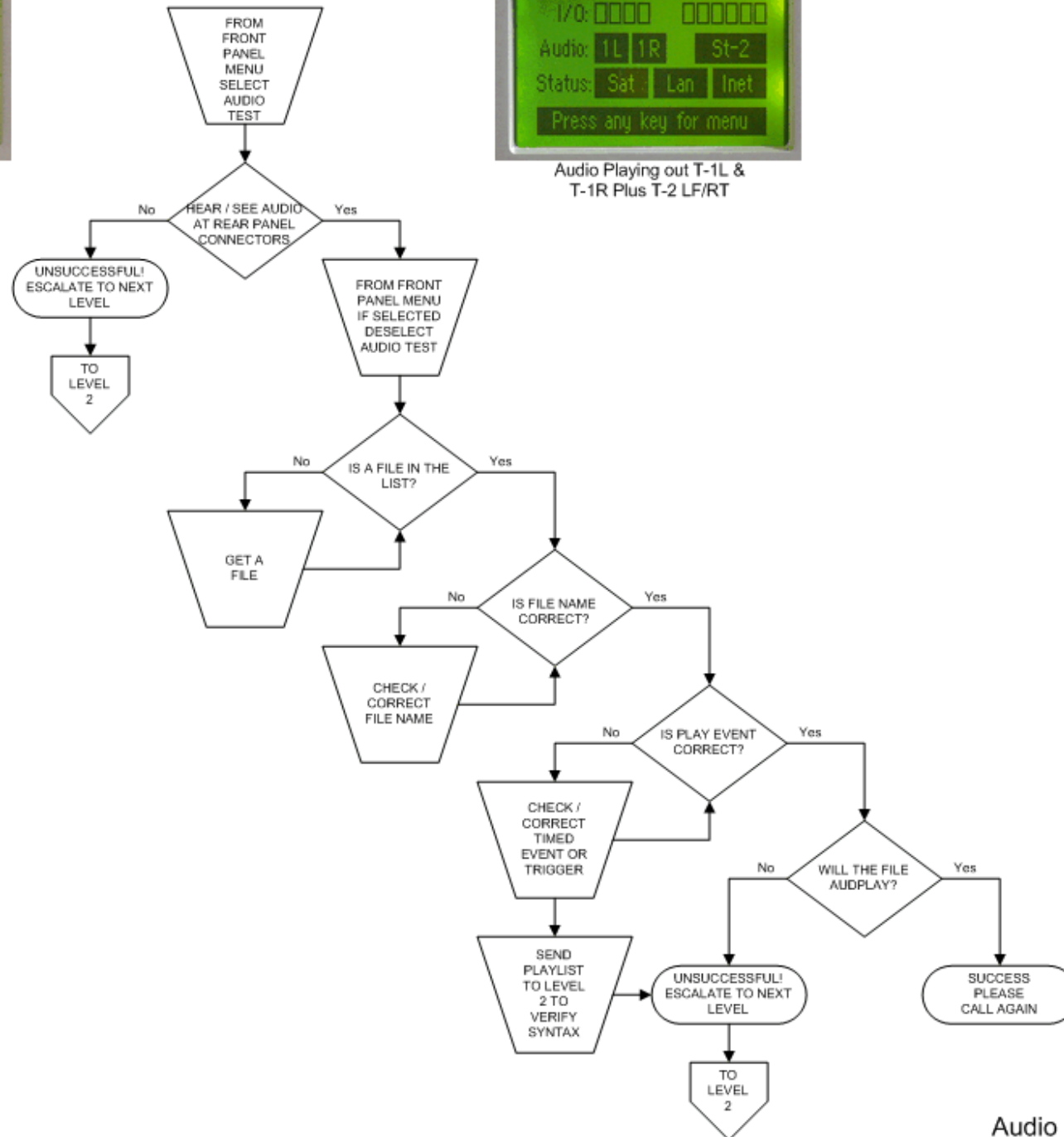
Audio Installation Verification
 AMR-100



NO Audio from T-1 LF/RT
or from T-2 LF/RT

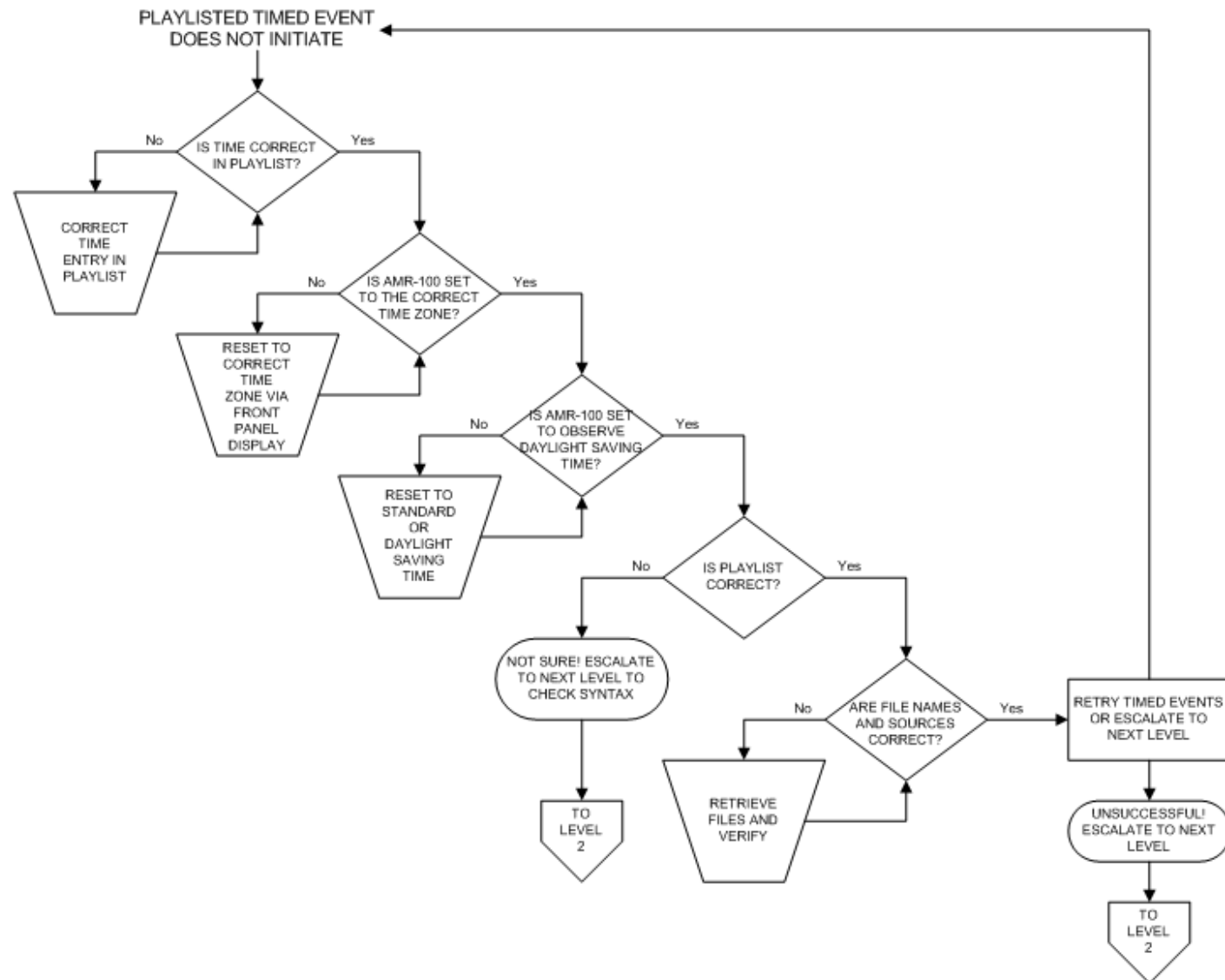


Audio Playing out T-1L &
T-1R Plus T-2 LF/RT



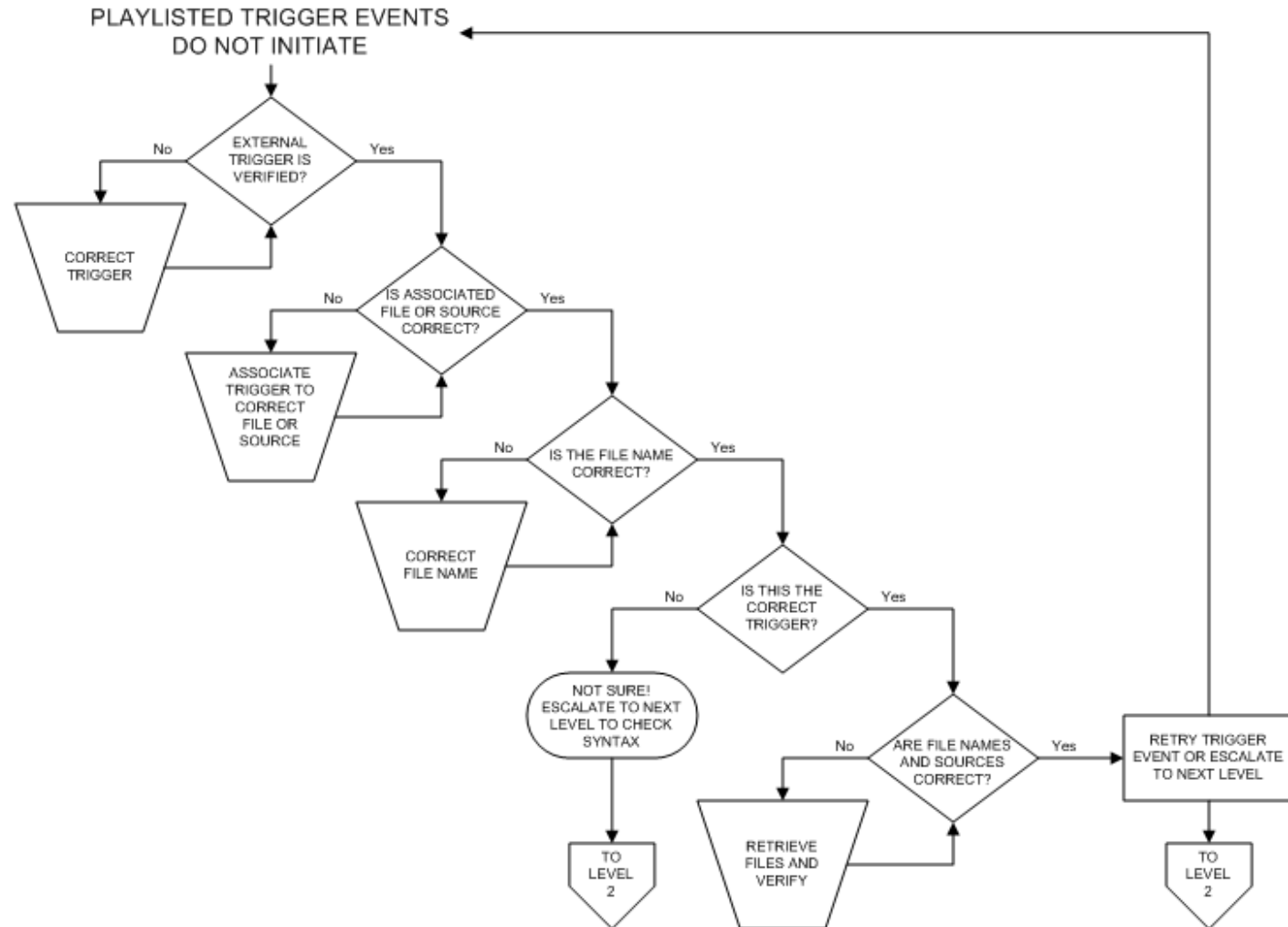
Use this chart to trouble shoot suspected audio
problems beyond initial installation.
Refer to Installation Manual

Audio Doesn't Play From
A Timed Event - Basic
AMR-100



Use this chart to trouble shoot problems associated with playlist events based on time. Refer to Installation Manual

Audio Doesn't Play From A TIMED EVENT - Advanced AMR-100



Use this chart to trouble shoot problems associated with playlist events based on Triggers. Refer to Installation Manual

Audio Doesn't Play From EXTERNAL TRIGGERS AMR-100