

# Table of Contents

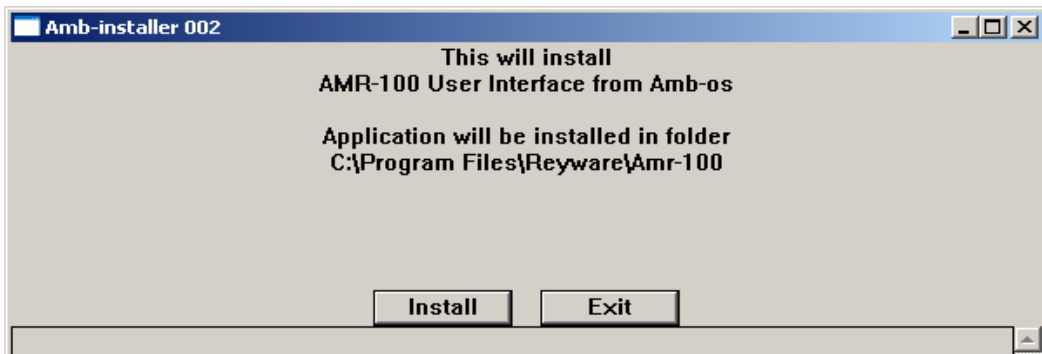
<u>INSTALLATION.....</u>	<u>2</u>
<u>File Installation.....</u>	<u>2</u>
<u>File Execution.....</u>	<u>3</u>

# INSTALLATION

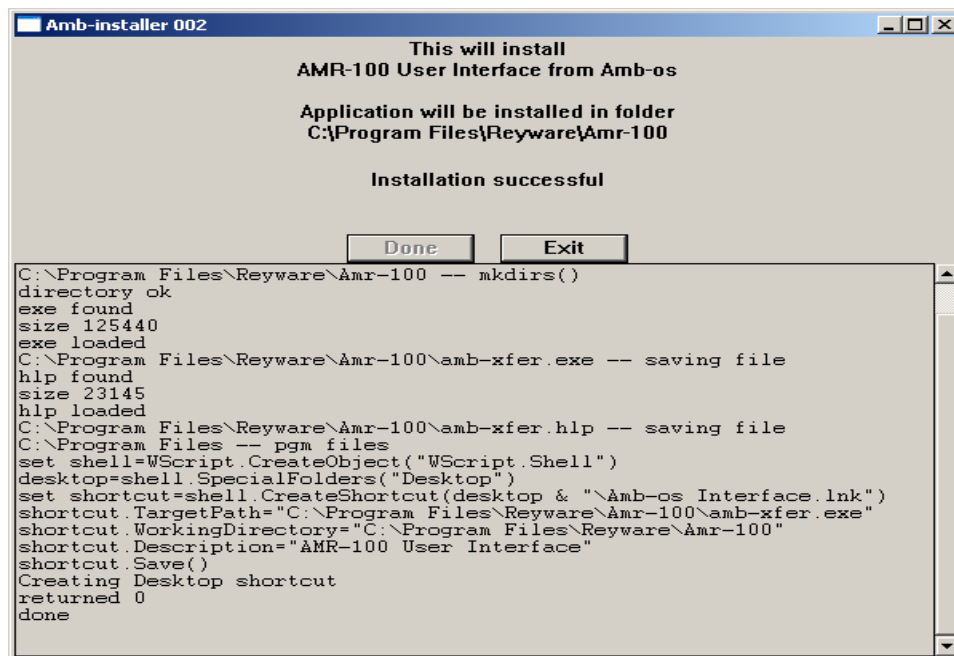
## File Installation

The program can be downloaded from the AMB-OS web site (<http://www.amb-os.com/support>). Run the program “amb-installer.exe” and it will bring up this window.

The install process will put a shortcut on your desktop for easy access. If you chose to not install the file, click exit. Remember that you must use this program to create [playlists](#) and to transfer audio programs from the AMR-100(r) receiver.



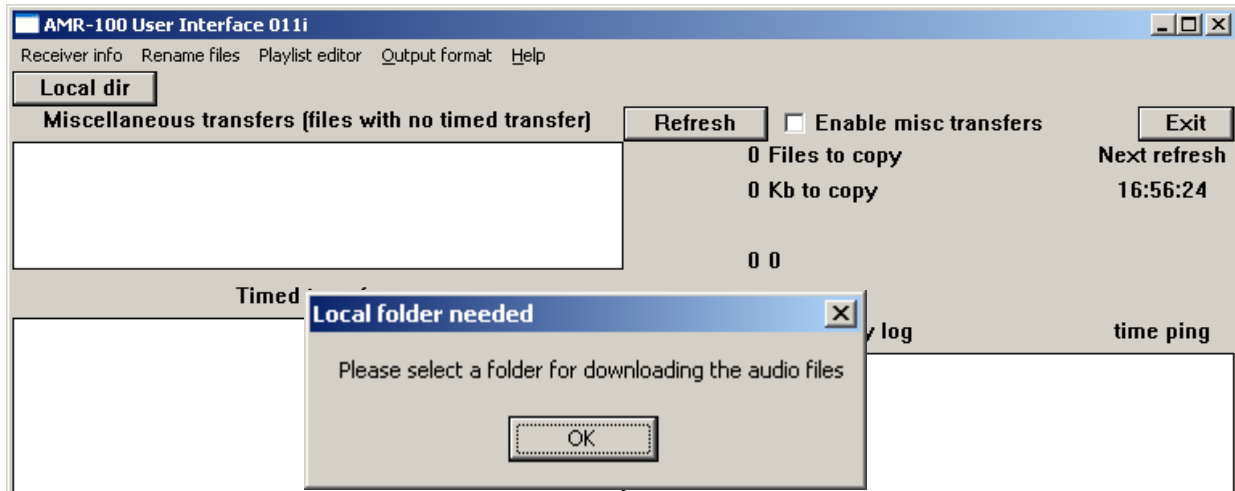
Click on “Install” to install the program. The window displays the progress of the installation.



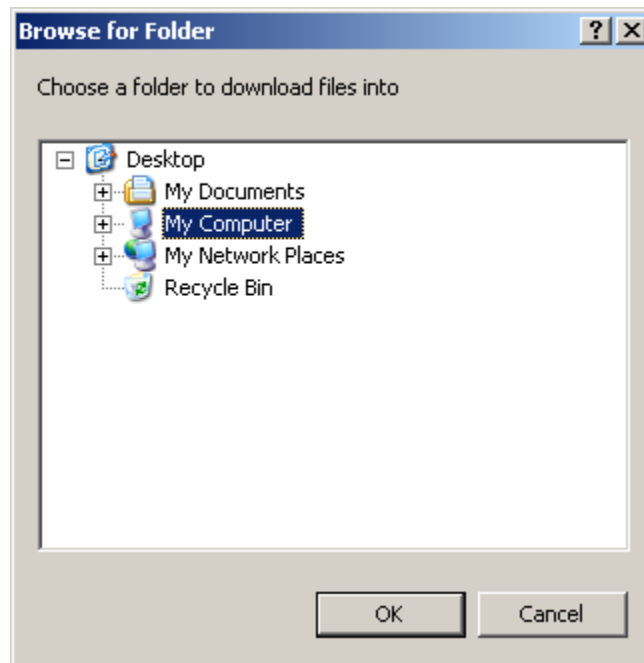
When the “Install” button changes to “Done” and a message appears over the buttons that says, “Installation successful,” the installation is complete and you can press “Exit.”

## File Execution

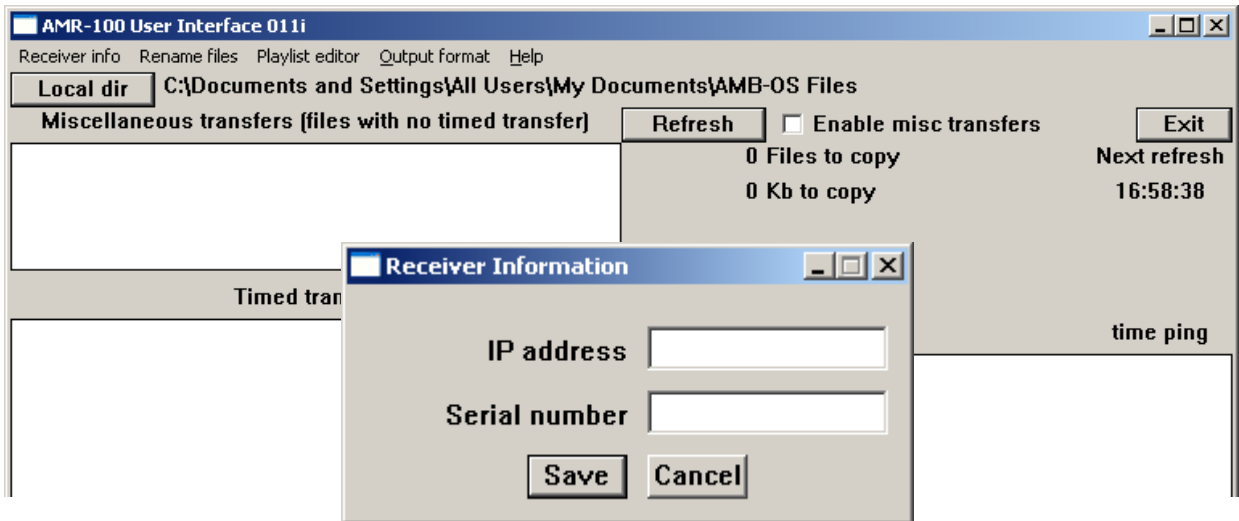
On your desktop, find the new icon labeled, “AMB-OS Interface” and double click on it to run the file. If you have not installed the program on the computer, you need to put in the name of the folder you want your audio files transferred. This only has to be entered once, but it can be changed at any time. The “Local dir” is where your audio files are to be transferred from the AMR-100(r) receiver. It can be a network drive or a directory your automation system requires.



Press okay in the dialog box “Local folder needed”



Select the folder you want to use and press “OK” to save that setting. After doing that, you will get a box asking for the IP address and the serial of your receiver.



The IP Address and serial number can be obtained from the front panel of your receiver. Press ENTER once and you will see the following display.

```

Setup  Date
-----
Firmware:  1.47
Serial No: 2001000
IP Addr:   10.100.10.100
Receiver Utilities
  
```

However, if DHCP was set to yes, then you will have to go into the IP Addr menu to get that address. You can obtain the IP Address by pressing ENTER again and then press the DOWN Arrow until the IP Addr: line is highlighted and press ENTER to obtain the following screen.

```

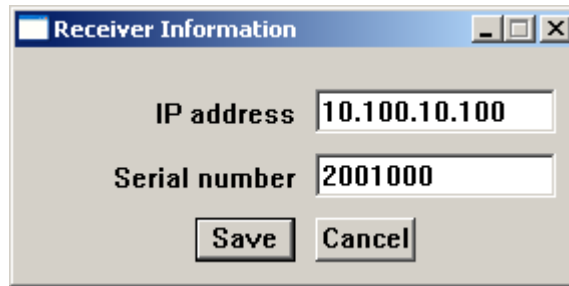
Setup  Date
-----
Firmware:  1.47
Serial No: 2001000
IP Addr:   DHCP
Receiver Utilities
  
```

Press ENTER and you will see the following screen with your assigned IP Address.

```

Setup  Date
-----
MAC:      xxxxxxxxxxxxxxxxx
Alarm:    #6
DHCP:     Yes
IP Addr:  192.168.1.100
  
```

Record these numbers and enter them into the receiver information dialog box.



Now press "Save" and the program information is saved and the AMB-OS Utility is ready to use. Assuming you've entered the right information about the receiver and your local directory, you should see the following screen.

